

All rights reserved by **CNHi**.

The information contained in this catalogue is intended to be of a general nature only. **CNHi** may at any time and from time to time, for technical or other necessary reasons, modify any of the details or specifications of the product described in this catalogue.

To be sure of getting accurate, detailed and up-to-date information, an intending buyer should consult his nearest **CNHi** dealer or distributor.

Single item numeration method used in this catalogue may not be used without written consent from **CNHi**.

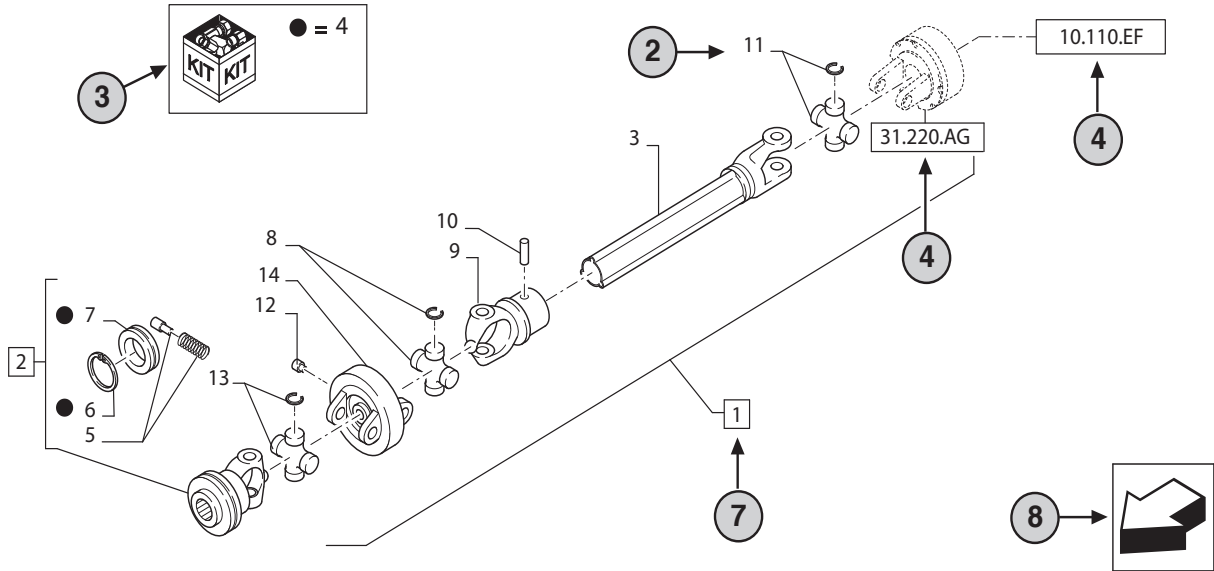
31.220.AD

01

p1

10/2014

VAR - 123782, 789101,987654 - PTO - D650



STANDARD ← 6

23

9

10

31.220.AD

01

p1

10/2014

VAR - 123782, 789101,987654 - PTO - D650

11

12

13

14

REF	FN	PART NUMBER	YR/SN	QTY	DESCRIPTION
1	1	86529340	20	1	SHAFT PTO, Incl 2 - 11
2	15	84014007		1	YOKE, Incl 4 -7 ← 7
3	16	NSS		1	NOT SERVICED SEPARATELY, SHAFT, 350mm, Incl in 1
4		84004292		1	KIT, Seal Kit, Incl 6, 7 ← 17
4		{84058743}		1	KIT, Seal Kit, Incl 6, 7
2	18		21		
	19		22		
		1 = FOR ITALY ONLY ← 5			

MODELS ← 1


- 1 Model Number and Model Description
- 2 Reference - Figure call-out of the part number.
- 3 Parts supplied in repair kits per symbol reference.
- 4 31.220.AD Part illustrated on the **Page** or in the **Figure** indicated, or calls for **Variations** or **Details**. Indicates components shown in detail elsewhere in the catalogue under the figure number shown.
- 5 Footnote references
- 6 Figure notes
- 7 1 2 Includes item(s) (See Description within partlist).
- 8 Orientation. (Arrow indicates front of the machine). 
- 9 Figure description.
- 10 General information of the figure.
- 11 Figure title number that aligns with the SRT. Standard Repair Time.
- 12 **Sequence** code within the assembly.
- 13 Page number within the sequence code.
- 14 **Date** of printing or updating of page (month-year).
- 15 **Note** - Relating to the Part Number. There is a key to symbols and abbreviations at the bottom of the text page.
- 16 Non-serviced parts.
- 17 Further description of the part to help confirm identification.
- 18 Not available as service part.
- 19 Part Number.
- 20 To be defined.
- 21 Total **Quantity** of the Part referred to in the page.
The quantity can be replaced by the following indications:
AR = quantity as requested.
- 22 Part **Description**.
- 23 Variant Codes

TABLE OF CONTENTS

05.100.03		FILTER & CAPACITIES, 1000
05.100.03	01	FILTER & CAPACITIES, 1600
06A01		BLOCK ASSEMBLY, CYLINDER
06B01		CRANKSHAFT PARTS
06C01		FLYWHEEL & RELATED PARTS
06D01		TIMING GEAR COVER & RELATED PARTS
06E01		CAMSHAFT
06F01		PISTONS & RODS
06G01		CYLINDER HEAD
06H01		AIR CLEANER & EXHAUST PARTS
06J01		OIL PUMP
06J02		OIL FILTER
06K01		ENGINE GASKET KIT
09A01		FUEL TANK & FILTER PARTS
09A02		FUEL FILTER KIT - SBA360020040
09B01		INJECTION PUMP & RELATED PARTS
09C01		FUEL INJECTION PUMP
09D01		FUEL INJECTOR
07A01		GEAR SHIFT
07C01		TRANSMISSION GEAR, 4 WHEEL DRIVE
07D01		TRANSMISSION CASE & PTO
07E01		PEDAL & STEPS
07F01		PEDAL STEP, 4 WHEEL DRIVE
07G01		CLUTCH & HOUSING
08A01		RADIATOR PARTS
08B01		WATER PUMP
04A01		DIFFERENTIAL GEAR
04B01		REAR AXLE
02A01		BRAKES
11A01		WIRING HARNESES
11B01		ALTERNATOR (73/10-74)
11B02		ALTERNATOR (11-74/-)
11C01		STARTING MOTOR, ON & BSN V101421 (73/10-74)
11C02		STARTING MOTOR, ON & ASN U101421 (11-74/-)
11D01		LIGHTING ACCESSORIES
11E01		DUAL FLASHER LAMPS, L.H. & R.H.

TABLE OF CONTENTS

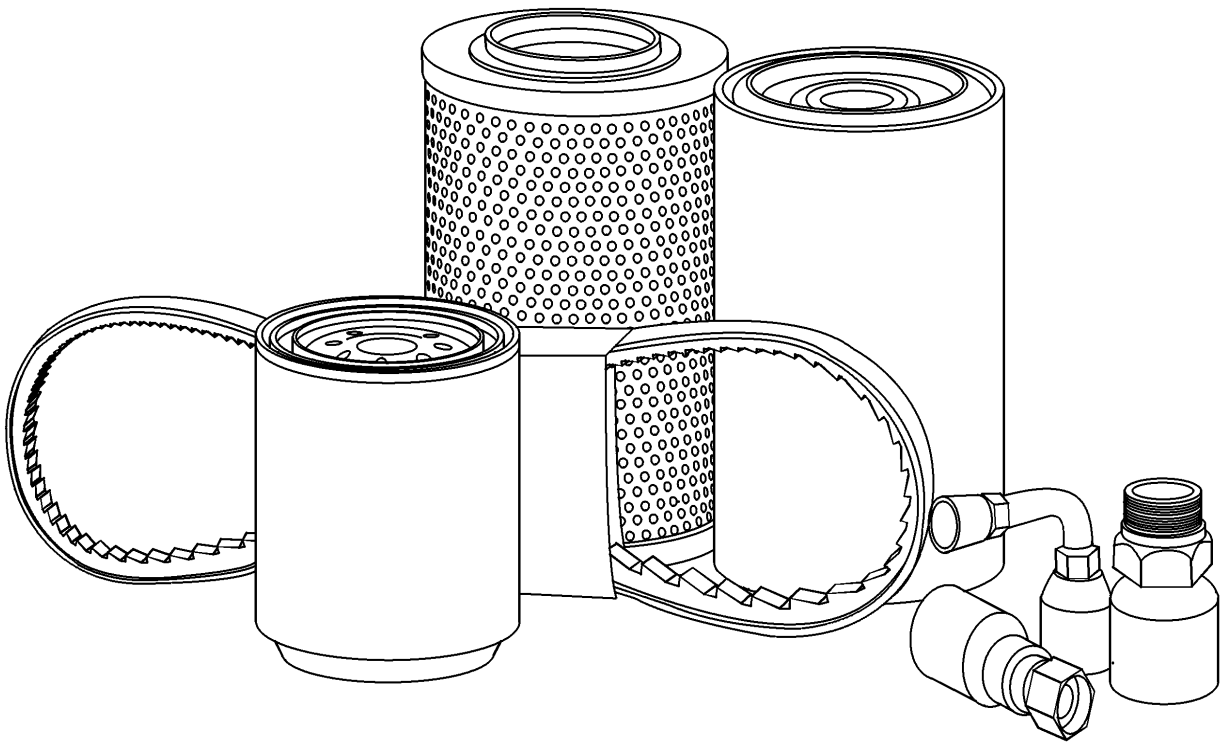
03A01	STEERING
03B01	STEERING ARM & KNUCKLE
03C01	FRONT AXLE 2WD
03C02	FRONT AXLE - FWD
03D01	FRONT DIFFERENTIAL GEARS - FWD
05A01	HYDRAULIC CONTROL VALVE
05A02	HYDRAULIC CONTROL VALVE & QUADRANT
05B01	LIFT COVERS & ARMS
05C01	PISTON & DEPTH CONTROL PARTS
05D01	HYDRAULIC PUMP SUPPLEMENTS
05E01	HYDRAULIC PUMP
05F01	THREE POINT LINKAGE
05F01A	SHIELD & HITCH
05G01	DRAWBARS
05H01	REMOTE CONTROL VALVES
14A01	HOOD & GRILLE
14B01	FENDERS & SEAT
01A01	FRONT & REAR WHEELS
01A02	FRONT & REAR WHEELS, OPTIONAL
01B01	FRONT & REAR WEIGHTS
12A01	INSTRUMENT PANEL
12B01	THROTTLE CONTROL & BATTERY
13A01	SEAT - 1000, 1600
13B01	SEAT BELT & ROLLBAR

SECTION INDEX

GENERAL

05.100.03		FILTER & CAPACITIES, 1000
05.100.03	01	FILTER & CAPACITIES, 1600

FILTER & CAPACITIES, 1000



FILTER & CAPACITIES, 1000

REF FN	PART NUMBER	YR/SN	QTY DESCRIPTION
*	CNH XHD COOLANT		ANTIFREEZE Coolant, 1.4-Gal (5.3L)
1	86546613		1 ENGINE OIL FILTER Spin On
*	M-GOLD SAE15W40		OIL Engine, With Filter, 15W40, 5.3-QT (5L)
*	M-GOLD SAE15W40		OIL Engine, With Out Filter, 5-QTS (4.7L)
2	SBA314530122		1 ELEMENT Oil Bath
3	84298916		1 HYDRAULIC OIL FILTER
4	SBA340500090		1 FILTER STRAINER Cartridge
*	MULTI G 134		OIL Rear Axle & Transmission, Hydraulic Separate, 134D, 5.25-Gal (19.9L)
*	MULTI G 134		OIL Power Steering, Hydraulics, 134D Tractor, 2.6-Gal (9.8L)
5	SBA360720020		1 FUEL FILTER Cartridge

1000-2 CYL COMPACT TRACTOR

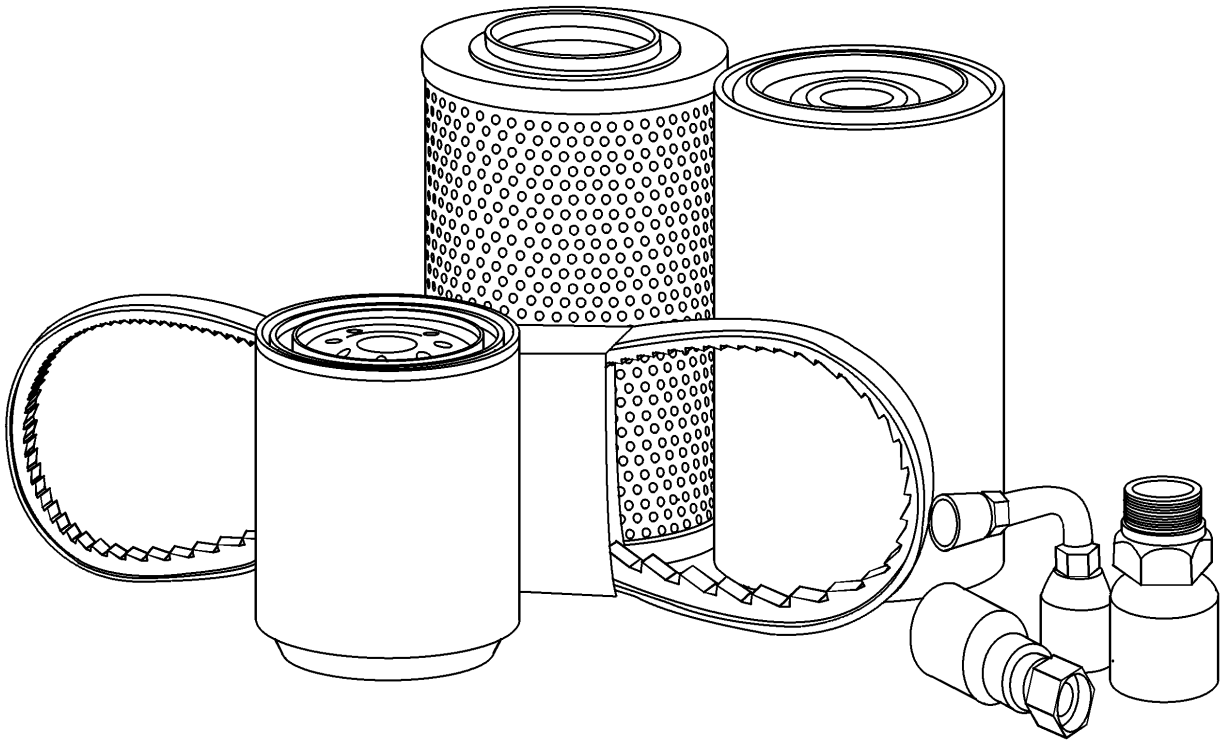
05.100.03

01

p1

4/2018

FILTER & CAPACITIES, 1600



FILTER & CAPACITIES, 1600

REF FN	PART NUMBER	YR/SN	QTY DESCRIPTION
*	CNH XHD COOLANT		ANTIFREEZE Coolant, 1.4-Gal (5.3L)
1	86546613		ENGINE OIL FILTER
2	86546613		ENGINE OIL FILTER
*	M-GOLD SAE15W40		OIL Engine, 15W40, w/ Filter, 5.3-QT (5L)
*	M-GOLD SAE15W40		OIL Engine, w/o Filter, 5-QT (4.7L)
3	SBA314530122		ELEMENT Oil Bath
*	MULTI G 134		OIL Rear Axle and Transmission,134D, Hyd Separate, 5.25-Gal (19.9L),
4	SBA360720020		FUEL FILTER
*	MULTI G 134		OIL Power Steering, 134D,Tractor Hyd, 2.6-Gal (9.8L)

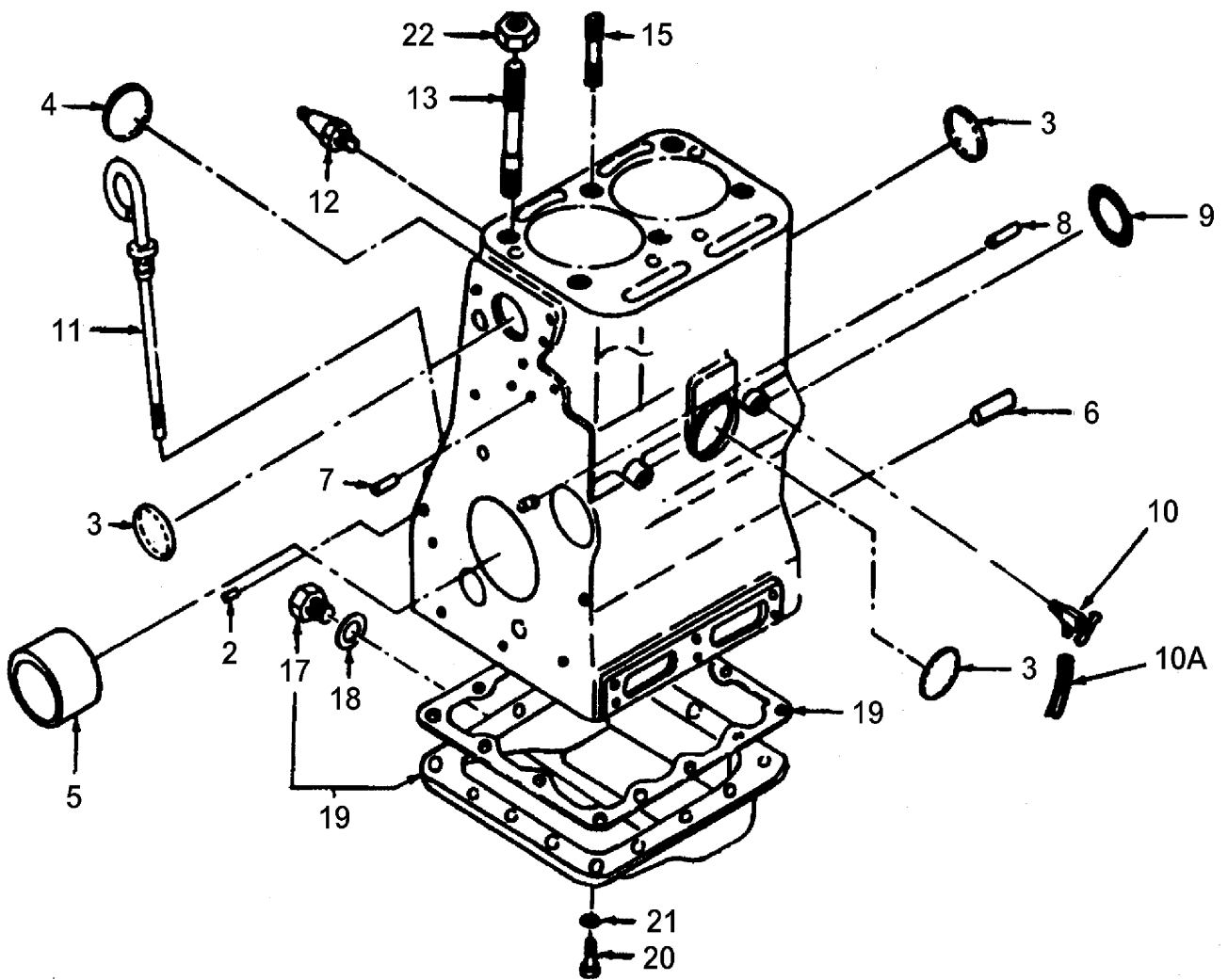
1600-2 CYL COMPACT TRACTOR

SECTION INDEX

ENGINE

06A01	BLOCK ASSEMBLY, CYLINDER
06B01	CRANKSHAFT PARTS
06C01	FLYWHEEL & RELATED PARTS
06D01	TIMING GEAR COVER & RELATED PARTS
06E01	CAMSHAFT
06F01	PISTONS & RODS
06G01	CYLINDER HEAD
06H01	AIR CLEANER & EXHAUST PARTS
06J01	OIL PUMP
06J02	OIL FILTER
06K01	ENGINE GASKET KIT

BLOCK ASSEMBLY, CYLINDER

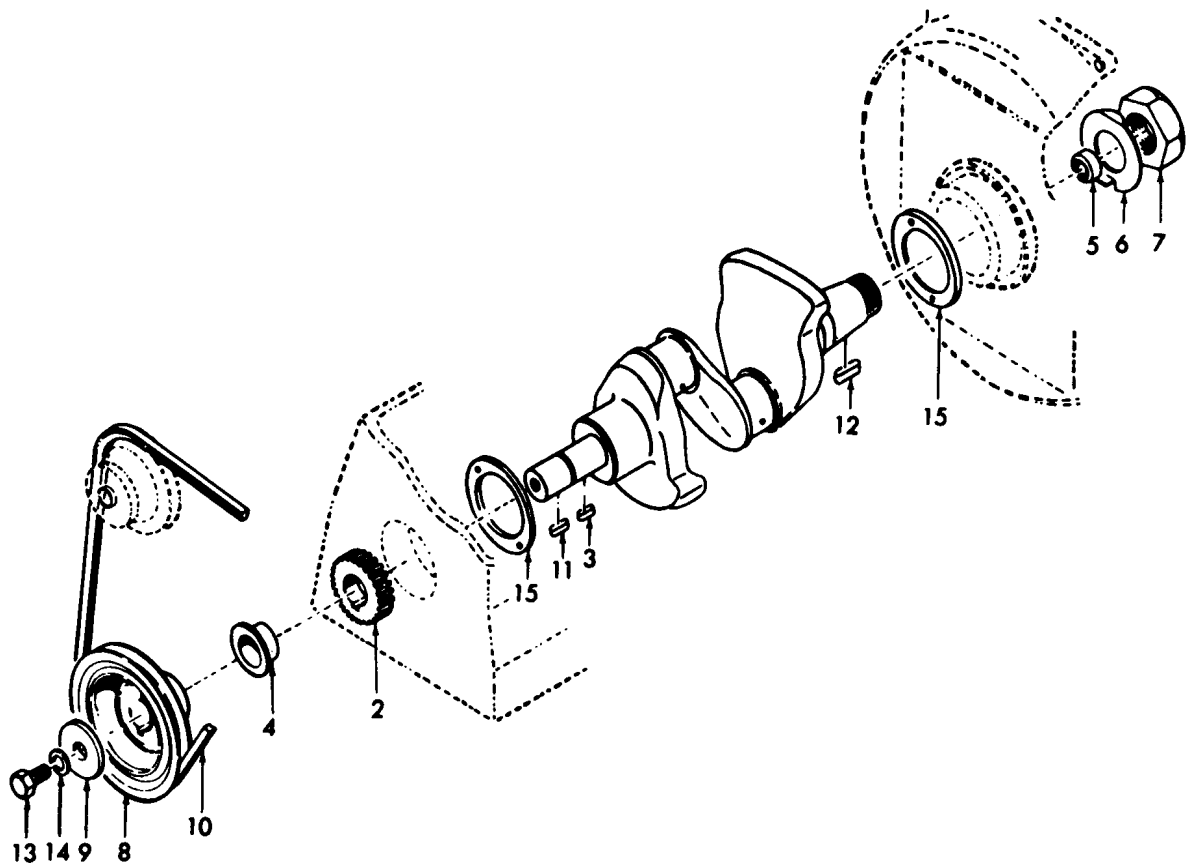


BLOCK ASSEMBLY, CYLINDER

REF FN	PART NUMBER	YR/SN	QTY DESCRIPTION
1	1	SBA110106051	1 SPARE PART Block Assy., Cylinder
1	2	SBA110106055	1 CYLINDER BLOCK Block Assy., Cylinder
1	3	SBA110106056	1 BLOCK Block Assy., Cylinder Includes: Ref. 2-8
2		SBA198466010	3 PLUG Plug, Blank
3		SBA064100045	3 PLUG Plug, Expansion
4		SBA064100055	1 PLUG Plug,55mm Dia Expansion
5		SBA198516050	1 BEARING Bushing, Front Main Bearing, Standard
6		SBA030501025	2 BALL STUD M10 x 25 L BALL PIN Pin
7		SBA030500625	2 DOWEL Pin, M6x26
8		SBA030300410	1 PIN Pin, Spring, M4x10
9		SBA052300500	1 O-RING O-Ring, Block
10		SBA198736052	1 TUBE Drain, Block
10A	4	SBA068106280	1 SPARE PART Tube, Drain, Vinyl
10A		SBA068118280	AR TUBE Tube, Drain, Vinyl
11		SBA198416010	1 GAUGE Dipstick, Oil Gauge
12		SBA185246011	1 SENDER UNIT Sensor, Oil Pressure
13		SBA111136020	5 STUD Stud, Cylinder Block
15		SBA111136090	1 STUD Stud, Cylinder Block, Short
16		SBA110706020	1 PAN Pan Assy., Oil Includes: Ref. 17&18
17		SBA010201220	1 BOLT Bolt, Drain
18		SBA026100012	1 WASHER Seal, Washer
19		SBA110996030	1 GASKET Gasket, Oil Pan
20		120103	14 BOLT M8 x 1.25 x 16mm, Cl 8.8 Bolt, Hex, Pan, M8x16
21		PL	14 PROCURE LOCALLY Washer, Lock, Pan, 5/16"
22		SBA199376010	6 NUT Nut, Hex, M12
23	5	SBA199236260	1 RING Collar, Stud, 1
(1)	Used on & BSN U100821		
(2)	Used on & ASN U100201		
(3)	Used on & ASN U110313		
(4)	No Longer Serviced		
(5)	Not Illustrated		

1000-2 CYL COMPACT TRACTOR 1600-2 CYL COMPACT TRACTOR

CRANKSHAFT PARTS

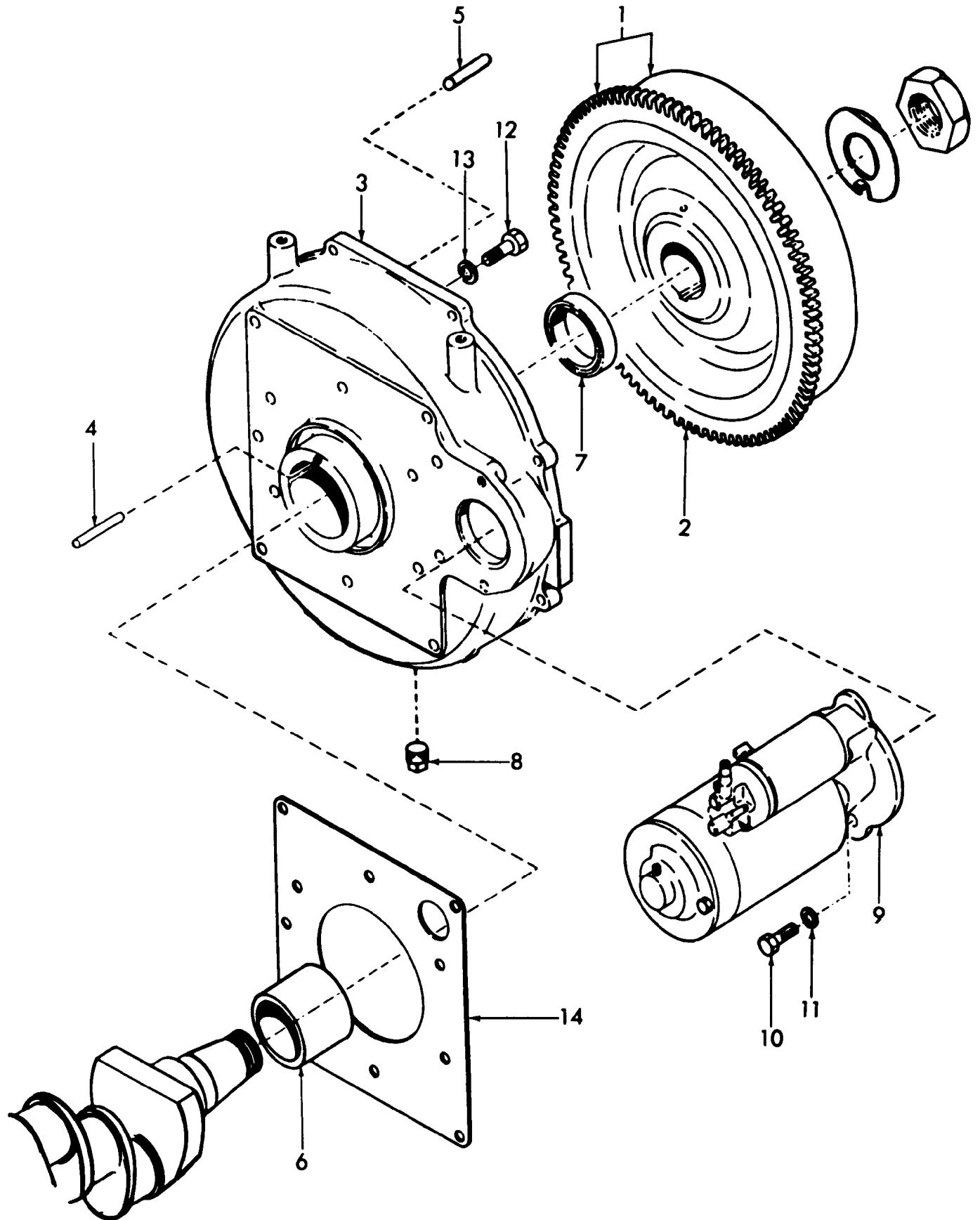


CRANKSHAFT PARTS

REF FN	PART NUMBER	YR/SN	QTY DESCRIPTION
	SBA115256043		1 CRANKSHAFT Assy. Incudes: Ref. 2 thru 5
2	SBA115276020		1 GEAR Crankshaft
3	SBA034109004		1 KEY
4	SBA115416020		1 NOZZLE Slinger, Oil
5	SBA040116001		1 BALL BEARING Bearing, Roller, Pilot
6	SBA199316021		1 LOCK WASHER Washer, Nut, Lock
7	SBA199376031		1 NUT Crankshaft
8 1	SBA115396042		1 PULLEY Crankshaft
9	SBA026109032		1 WASHER Spacer
10 2	86514600		1 V-BELT 0.38" W x 42.50" L Crankshaft to Fan & Alternator 0.38" W x 42.50" L
10	86514598		1 V-BELT 0.50" W x 44.00" L CrankShaft to Fan & Alternator 0.50" W x 44.00" L
11	SBA034100714		1 KEY Straight
12	SBA034109026		1 KEY Straight
13	86517808		1 SCREW M12 x 25mm Cap, HH, CL 8.8, M12 x 1.75 x 25
14	PL		1 PROCURE LOCALLY Washer, Lock, 1/2"
15	SBA199266010		2 THRUST WASHER Washer, Thrust, Main Bearing
(1)	No Longer Serviced		
(2)	Used on & BSN U101420		

1000-2 CYL COMPACT TRACTOR 1600-2 CYL COMPACT TRACTOR

FLYWHEEL & RELATED PARTS



FLYWHEEL & RELATED PARTS

REF FN	PART NUMBER	YR/SN	QTY DESCRIPTION
1	1	SBA115356051	1 ENGINE FLYWHEEL Flywheel Assy., Refer to Fig. 39 for Rubber Plug Clutch Inspection Hole Includes: Ref. 2
2		SBA115376020	1 RING GEAR Gear, Ring
3	1	SBA110406052	1 COVER Assy., Flywheel Includes: Ref. 4-6
4		SBA030300410	1 PIN Roll, M4 x 10
5		SBA030501025	2 BALL STUD M10 x 25 L DOWEL, , Pin M10 x 25 L
6		SBA198516050	1 BEARING Bushing, Cover
7		SBA198636050	1 SEAL Oil
8	1	SBA398430040	1 PLUG Cover
9		SBA185086052	1 STARTER MOTOR Motor Assy., Starter
10	2	SBA011511230	2 BOLT M12 x 30 Hex, , Starter to Cover M12 x 30
10		86517808	2 SCREW M12 x 25mm Cap, HH, CL 8.8, M12 x 1.75 x 25
11		PL	2 PROCURE LOCALLY Washer, ,Lock, 1/2"
12		BER43139	15 BOLT HH, CL 8.8, M10 x 1.5 x 25
13		PL	15 PROCURE LOCALLY Washer, Lock, 3/8"
14		SBA110996042	1 GASKET Flywheel Cover W/ASBESTOS
14		87351910	1 GASKET Flywheel Cover
		SBA185816021	1 SOLENOID Assy., Refer to Fig. 50, Ref. 15
(1)	No Longer Serviced		
(2)	Used on & BSN U101421		

1000-2 CYL COMPACT TRACTOR 1600-2 CYL COMPACT TRACTOR

**Thanks very much for your reading,
Want to get more information,
Please click here, Then get the complete
manual**

JustClickHere 

NOTE:

**If there is no response to click on the link above,
please download the PDF document first, and then
click on it.**

**Have any questions please write to me:
admin@servicemanualperfect.com**